

Racing wheelchair

**HONDA**  
The Power of Dreams

**挑** IDOMI  
Honda Racing Wheelchair

**翔** KAKERU  
Honda Racing Wheelchair

[ STANDARD ]



**HONDA**  
The Power of Dreams

Honda develops, manufactures, and sells racing wheelchairs that integrate technologies and expertise from across the Honda Group based on the concept of "delivering the smile of victory to the athlete."

For inquiries regarding product purchases and sales, please contact Honda Sun Co., Ltd. via its dedicated website.

<https://racer.honda-sun.co.jp/en/>



Honda Motor Co., Ltd. Honda R&D Co., Ltd. Yachiyo Industry Co., Ltd. Honda Sun Co., Ltd.

Honda Sun Co., Ltd.  
Kawasaki 3968, Hiji-machi, Hayami-gun, Oita 879-1505, Japan Tel: +81-977-73-1414 (main)  
\*Available 8:30-17:00 weekdays (closed on Saturday, Sunday, national holidays, and long holidays)

Published by **Honda Motor Co., Ltd.** 2-1-1, Minami-Aoyama, Minato-ku, Tokyo 107-8556, Japan Nov.2024





## Full-carbon racer for the international athlete

With an unmitigated passion for winning, we developed this dependable racing wheelchair by adopting carbon materials for the main frame, seat frame and wheels and then making various refinements in pursuit of the lightest, stiffest racer possible.



## Hybrid racer for the emerging athlete

Based on the same design concept as KAKERU, but built so more athletes can experience the joy of racing. This hybrid racer combines a carbon main frame with an aluminum seat frame.



### 3D measurement technology

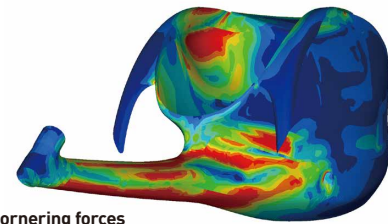
The seat frame is customized to fit each athlete's unique body.

\*The athlete's measurements will be taken at a designated Honda location.



### Advanced carbon design technology

Ultralight carbon wheels and vibration-damping carbon frame employ an optimized layered design that draws on the unique properties of composite material.



Analysis of cornering forces on frame structure

### Ultralight High-rigidity Wheels

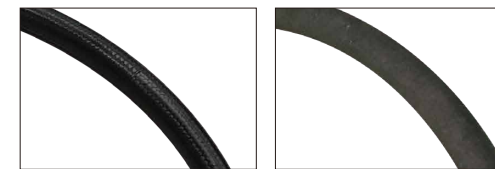
The new carbon wheel structure is both ultralight and highly-rigid to transfer maximum power from the athlete's arms to the road. The number of carbon sheet ply can be customized with up to two additional ply for athletes seeking even greater rigidity.



\*Both the inner and outer ply customizations are available as an option.  
\*Tires not included.

### Light Carbon Handrim

The carbon hand rims are highly circular to reduce missed catches. They can also be customized with a diamond coating to help maintain grip strength even in rain. (Optional, choice of two types of granularity)



\*Light carbon handrims are compatible only with Honda-manufactured wheels (ultralight high-rigidity wheels and standard wheels).

### Frame and Front Fork

With the concept of "sharing the smile of victory", the front area has been redesigned to better match that of the Kakeru Flagship racer. It also utilizes the same carbon front fork as the Kakeru Flagship racer. (From the 2021 model)



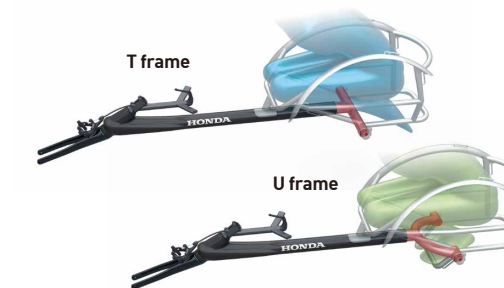
### Built-in Damper

Just as with the Kakeru Flagship racer, the steering damper has been housed inside the frame with a design that both protects critical driving components and enables a clean and elegant front fork. (From the 2021 model)



### Two seat frame types

Choose from two types of seat frames—the T frame and U frame—depending on how you like to sit.



### Standard wheels

Like the hybrid racer itself, these hybrid wheels are made from carbon and aluminum so more athletes can experience the joy of racing.



### Main Specs

| Part            | Frame  | Rear wheel  | Handrim   |
|-----------------|--|---|---|
| Name            | KAKERU STANDARD  | Ultralight High-rigidity Wheel  | Light Carbon Handrim  |
| Structure       | Carbon monocoque frame, Carbon front fork  | Carbon outer layer, ROHACELL® core  | Carbon, aluminum for mounting parts   |
| Size            | Frame length (Standard size): 1,750-1,850mm<br>Frame width (Standard size): 250-400mm<br><small>*Size customization available (may not be possible depending on the order details)</small> | 27 inch   | 360mm/370mm/380mm   |
| Standard weight | 8,000g *When Ultralight High-rigidity Wheels are equipped  | Normal wheel: 850g / 1 additional ply: 910g / 2 additional ply: 970g<br>*When handrim and tire are not equipped                             | 150g *When a collar and washer are not installed  |
| Color           | Carbon surface   | Carbon surface  | Carbon surface  |
| MSRP            | ¥2,630,000 (without tax)<br><br>Set (Frame, Front wheel, Ultralight High-rigidity Wheels, Light Carbon Handrims, and Tires) ¥3,430,000 (without tax)                                       | 1 set (2 wheels)<br>Normal wheel: ¥650,000 / 1 additional ply: ¥750,000 / 2 additional ply: ¥850,000 (all without tax) *Tires not included. | 1 set (2 handrims)<br>Normal wheel: ¥150,000 / Diamond-coated type: ¥230,000 (both without tax)<br>*Choice of coarse or fine diamond granularity (equivalent to P200 or P400 sandpaper, respectively) |

\*Set details: Front wheels (CFRP): Corima, Tires: Panaracer, Changes to the set content are not accepted. \*Prices do not include maintenance, service, and other fees. \*Specifications are subject to change at any time without notice.

### Main Specs

| Part            | Frame  | Rear wheel   | Handrim   |
|-----------------|--|--|---|
| Name            | IDOMI  | Standard Wheel   | Light Carbon Handrim  |
| Structure       | Carbon main frame, Aluminum seat frame, Carbon front fork  | Carbon outer layer, carbon beam, aluminum                    | Carbon, aluminum for mounting parts   |
| Size            | Frame length: 1,750mm/1,800mm/1,850mm<br>Frame width: 270-420mm  | 27 inch  | 360mm/370mm/380mm   |
| Standard weight | 9,000g *When Standard Wheels are equipped  | 1,150g *When handrim and tire are not equipped               | 150g *When a collar and washer are not installed  |
| Color           | Main frame is carbon surface. Aluminum parts are anodized.   | Carbon surface   | Carbon surface  |
| MSRP            | ¥900,000 (without tax)<br><br>Set (Frame, Front wheel, Standard Wheels, Light Carbon Handrims, and Tires) ¥1,300,000 (without tax) | 1 set (2 wheels) ¥370,000 (without tax) *Tires not included. | 1 set (2 handrims)<br>Normal wheel: ¥150,000 / Diamond-coated type: ¥230,000 (both without tax)<br>*Choice of coarse or fine diamond granularity (equivalent to P200 or P400 sandpaper, respectively) |

\*Set details: Front wheel (Aluminum), Tires: Panaracer, Changes to the set content are not accepted. \*Prices do not include maintenance, service, and other fees. \*Specifications are subject to change at any time without notice.